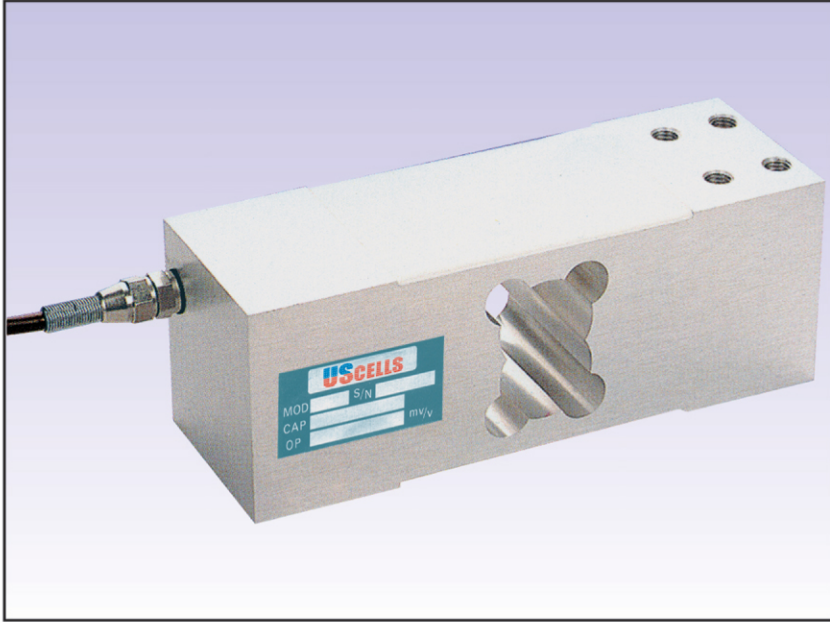


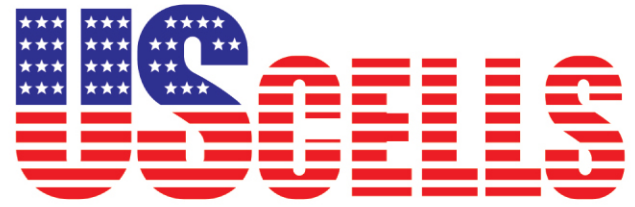
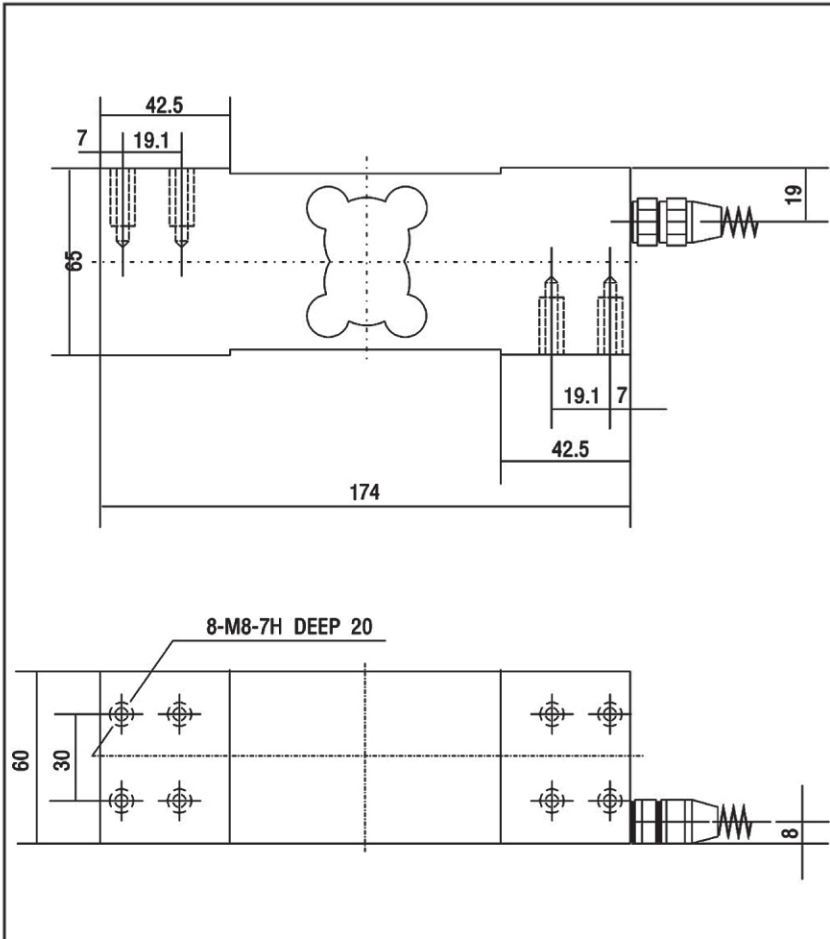
# MSM

## SERIES

Aluminium  
Single - Point Load Cells



### Dimension:



### Load Cell Specification:

Model	MSM
Capacity	60, 100, 150, 200, 250, 300, 500kg
Sensitivity MV/V	$2 \pm 0.01$
Zero Balance	< 2% of Full Scale
Creep ( 1 hour )	< 0.03% of Full Scale
Non-linearity	< 0.03% of Full Scale
Hysteresis	< 0.03% of Full Scale
Repeatability	< 0.02% of Full Scale
Temperature effect on Output	< 20PPM / °C of Applied Load
Temperature effect on zero	< 20PPM / °C of Applied Load
Operating temperature range	- 20 °C to 60 °C
Compensated temperature range	- 10 °C to 50 °C
Safe Overload	1.5 x Capacity
Input Impedance	$400 \pm 10$ Ohms
Output Impedance	$350 \pm 3$ Ohms
Insulation Resistant	> 2,000 Meg - Ohms
Recommended Excitation	10 V DC/AC
Maximum Excitation	15 V DC/AC
Cable Length	6 m
Environmental Protection	IP 67

### Cable Color Code

■ Red	+ Excitation
■ Black	- Excitation
■ Green	+ Signal
□ White	- Signal