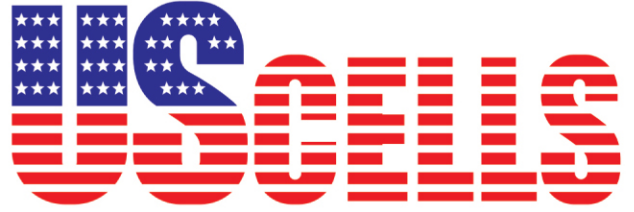


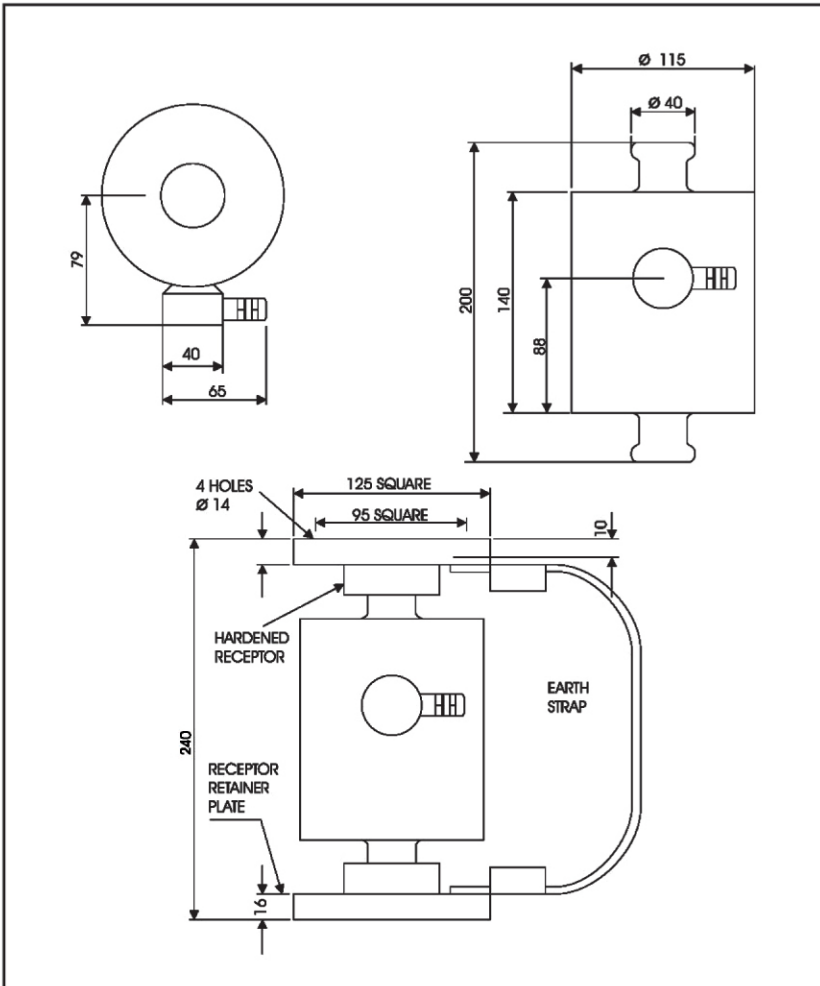
MPC

SERIES

Stainless Steel
Compression Load Cells



Dimension:



Load Cell Specification:

Model	MPC	Multi-Range
Capacity	30t / 45t	30t / 45t
Sensitivity MV/V	2 ± 0.1%	1.8 ± 0.1%
Zero Balance	< 2% of Full Scale	
Creep (1 hour)	< 0.02% of Full Scale	
Non-linearity	< 0.02% of Full Scale	
Hysteresis	< 0.03% of Full Scale	
Repeatability	< 0.02% of Full Scale	
Temperature effect on Output	< 20PPM / °C of Applied Load	
Temperature effect on zero	< 20PPM / °C of Applied Load	
Operating temperature range	- 20 °C to 60 °C	
Compensated temperature range	- 10 °C to 50 °C	
Safe Overload	1.5 x Capacity	
Input Impedance	750 ± 10 Ohms	
Output Impedance	700 ± 5 Ohms	
Insulation Resistant	> 5,000 Meg - Ohms	
Recommended Excitation	10 V DC/AC	
Maximum Excitation	15 V DC/AC	
Cable Length	20 m	
Environmental Protection	IP 68	

Cable Color Code

Red	+ Excitation
Blue	+ Sense
Black	- Excitation
Yellow	- Sense
Green	+ Signal
White	- Signal